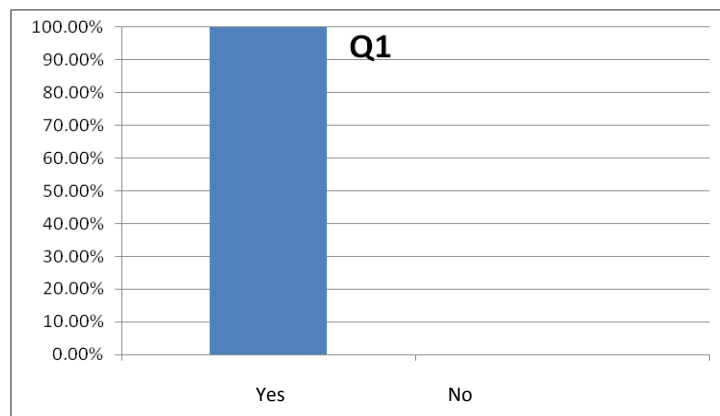


Blairvadach Outdoor Centre – User Survey 2010

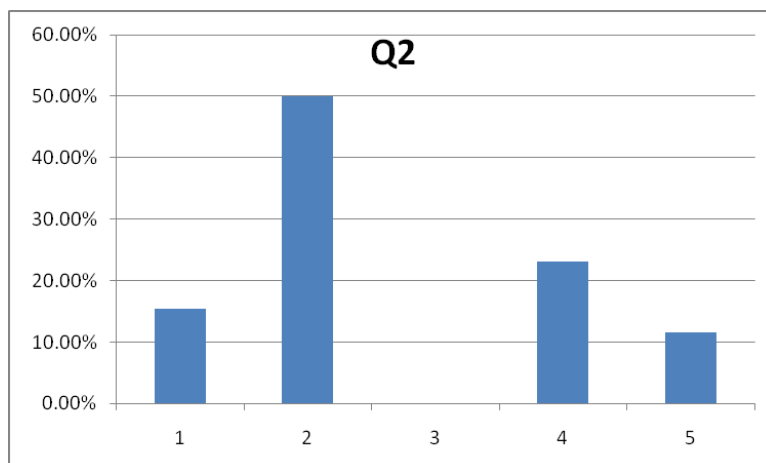
Twenty seven schools were surveyed, the client group who had visited since January 2010. In the timescale available there were twenty one responses. Six mainstream secondary, three secondary for children with additional support needs and twelve mainstream primary.

1. Is Blairvadach your first choice for Outdoor Learning provision?

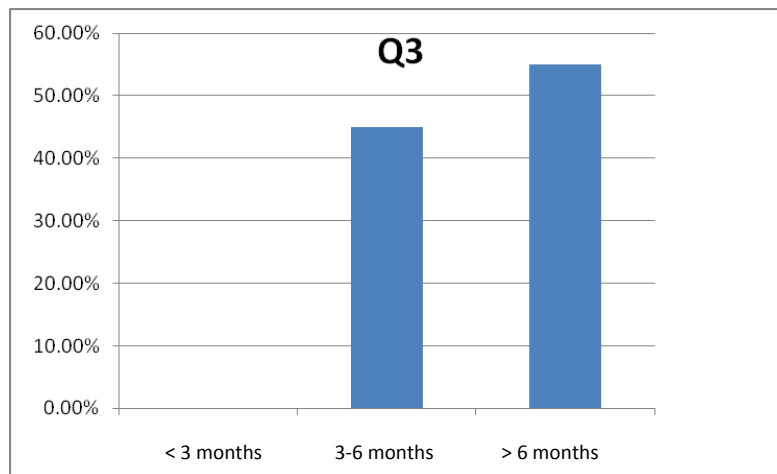


2. Are there any barriers to visiting Blairvadach?

- 1 Cost of visit
- 2 Availability of centre
- 3 Booking process
- 4 Cost of cover
- 5 Max group size

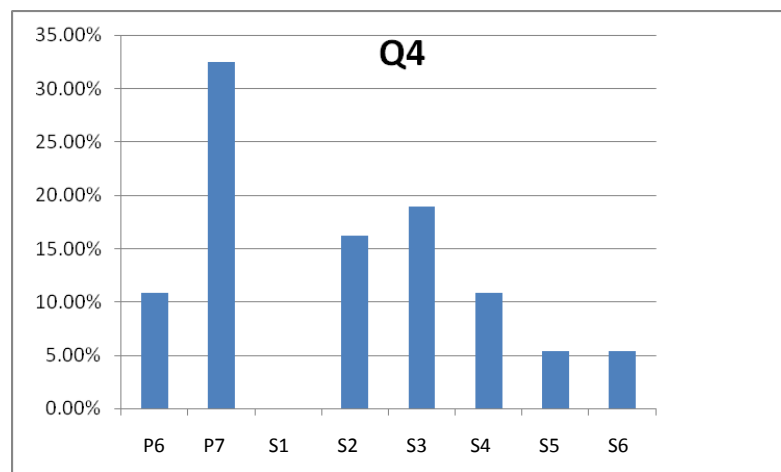


3. How much notice does your school need to book a visit?



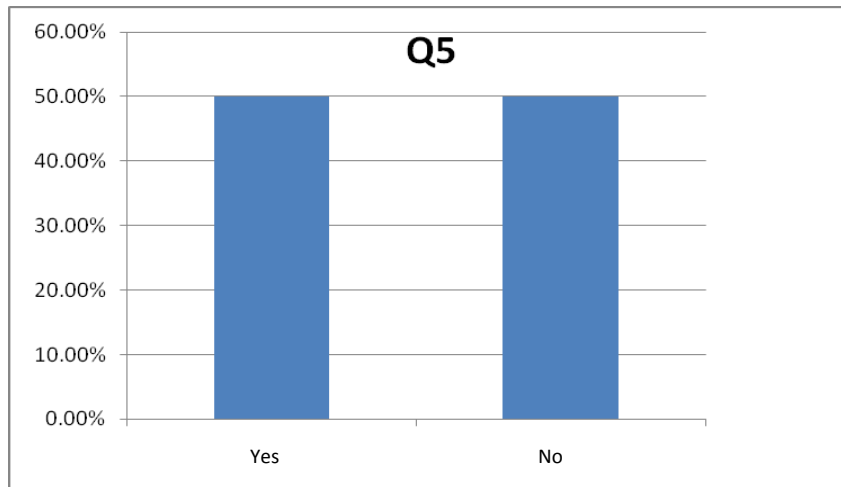
- Time was needed to allow parents to save up or pay for their visit
- Time was needed to plan for the inclusion of the visit into the pupils curriculum

4. What would your chosen age group be?



- P7 was highlighted as the visit is seen as a very important part of the transition from primary to secondary
- S2 and S3 because this age group is easier to release from school as there are less exam pressures

5. Do you target specific groups for your visit to Blairvadach?



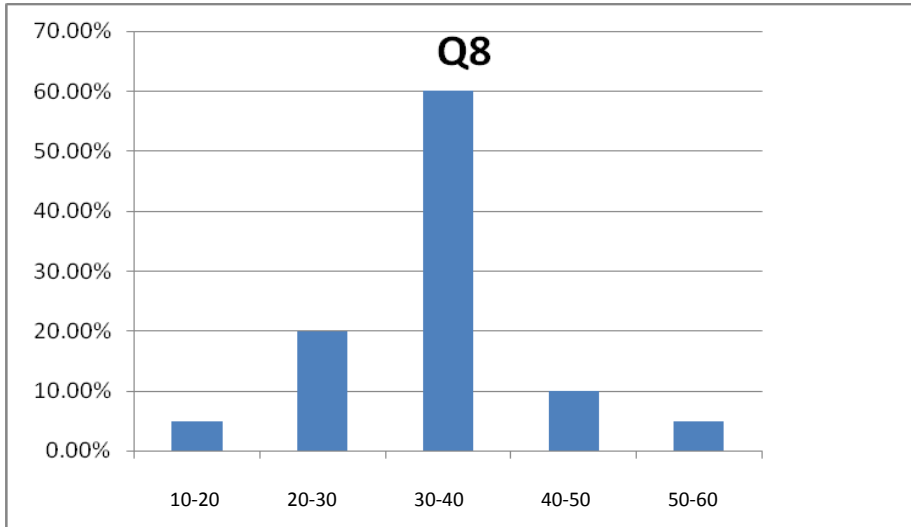
6. Who would you target for Blairvadach courses within your school and why?

- P7 to help with primary/secondary transition
- In secondary the visit was often seen as a reward for children who tried, attended well, behaved well rather always using the visit for working with children who had challenging behaviour

7. If Educational Services targeted specific groups, who should they target?

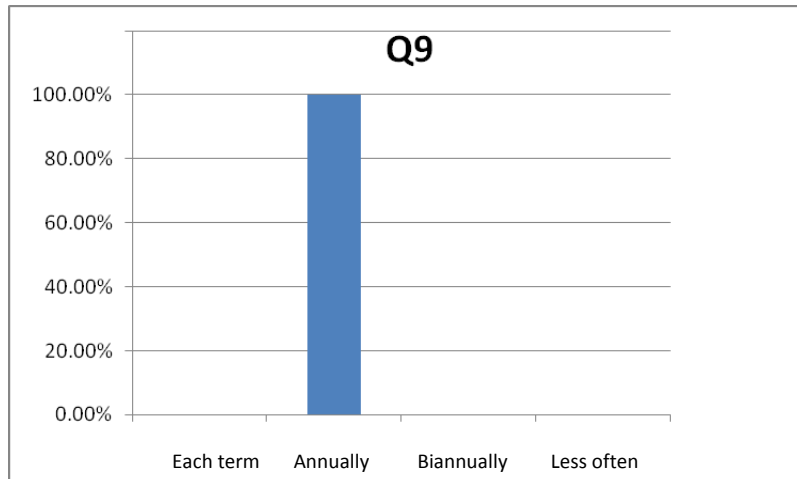
- The general view was schools should have the autonomy to target children or groups as schools understand the individual child's needs

8. What would be your ideal group size to bring to Blairvadach?

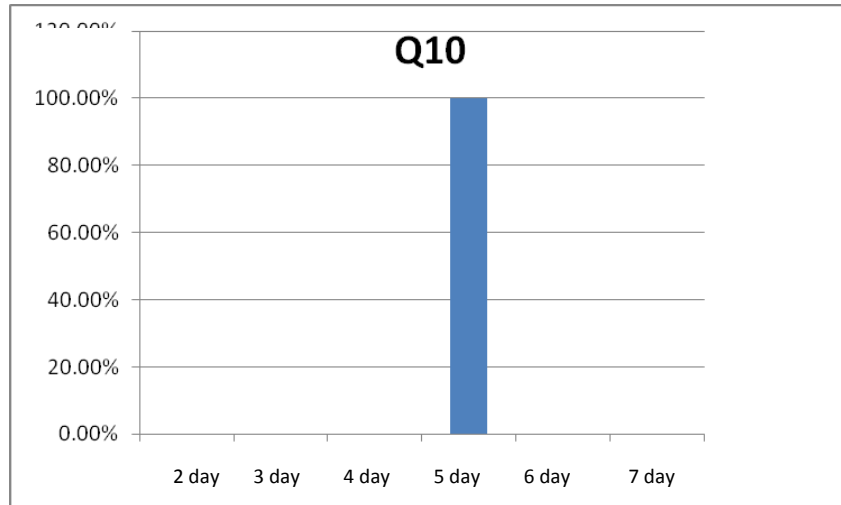


- 30-40 fits in with a primary class size
- 30-40 is seen as a manageable group size
- More children would have a considerable impact on teacher cover

9. How regularly would you wish to visit?

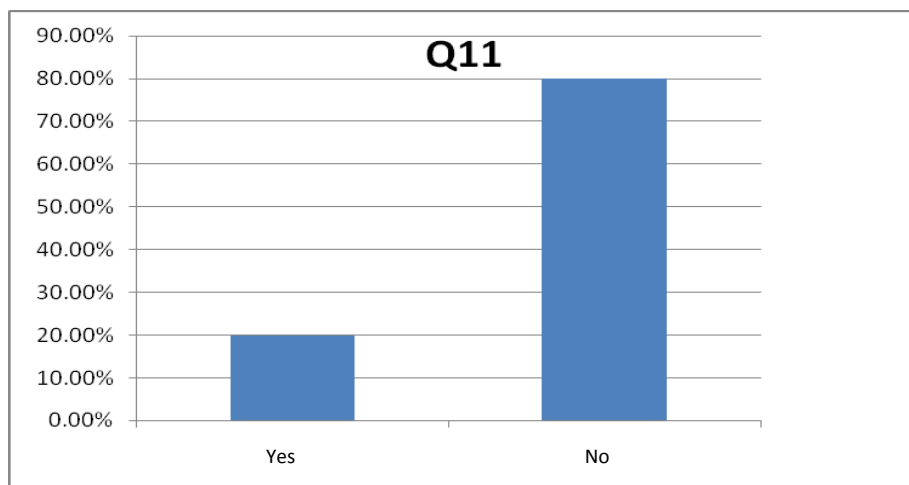


10. What would be the ideal length of residential course?



- Shorter courses would not deliver the great benefits to the children of personal and social development as there would not be time to build very important relationships required
- Shorter courses would lead to a lack of breadth of experience
- Shorter courses would not allow skills to be developed

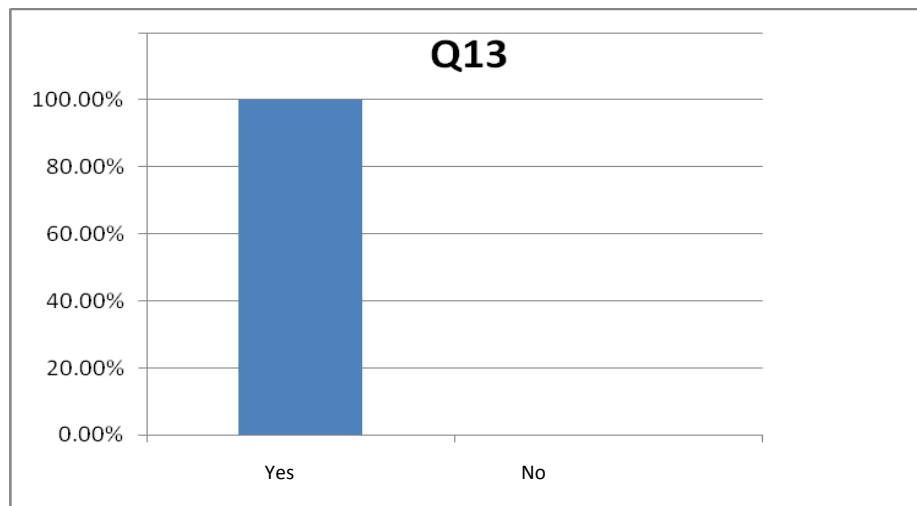
11. Do you mind sharing your visit with another school or user group?



12. What are/were your educational aims of the visit?

- The overarching aims from all schools are in contained Health and Wellbeing, with teambuilding, cooperation, self confidence and meeting challenges always coming to the fore

13. Did Blairvadach meet your aims?



14. What are Blairvadach's weaknesses?

- None highlighted

15. What are Blairvadach's strengths?

- High quality of staff
- Well organised
- An exemplar for Curriculum for Excellence
- Good and fair discipline
- Quality equipment
- Quality of pastoral care
- Knowledge of support need

16. Please suggest anything that could improve the overall success of your visit to Blairvadach.

- Improve old accommodation
- Not knowing whether a booking will be offered
- Develop half day/day courses to fit in with school reward systems (secondary)