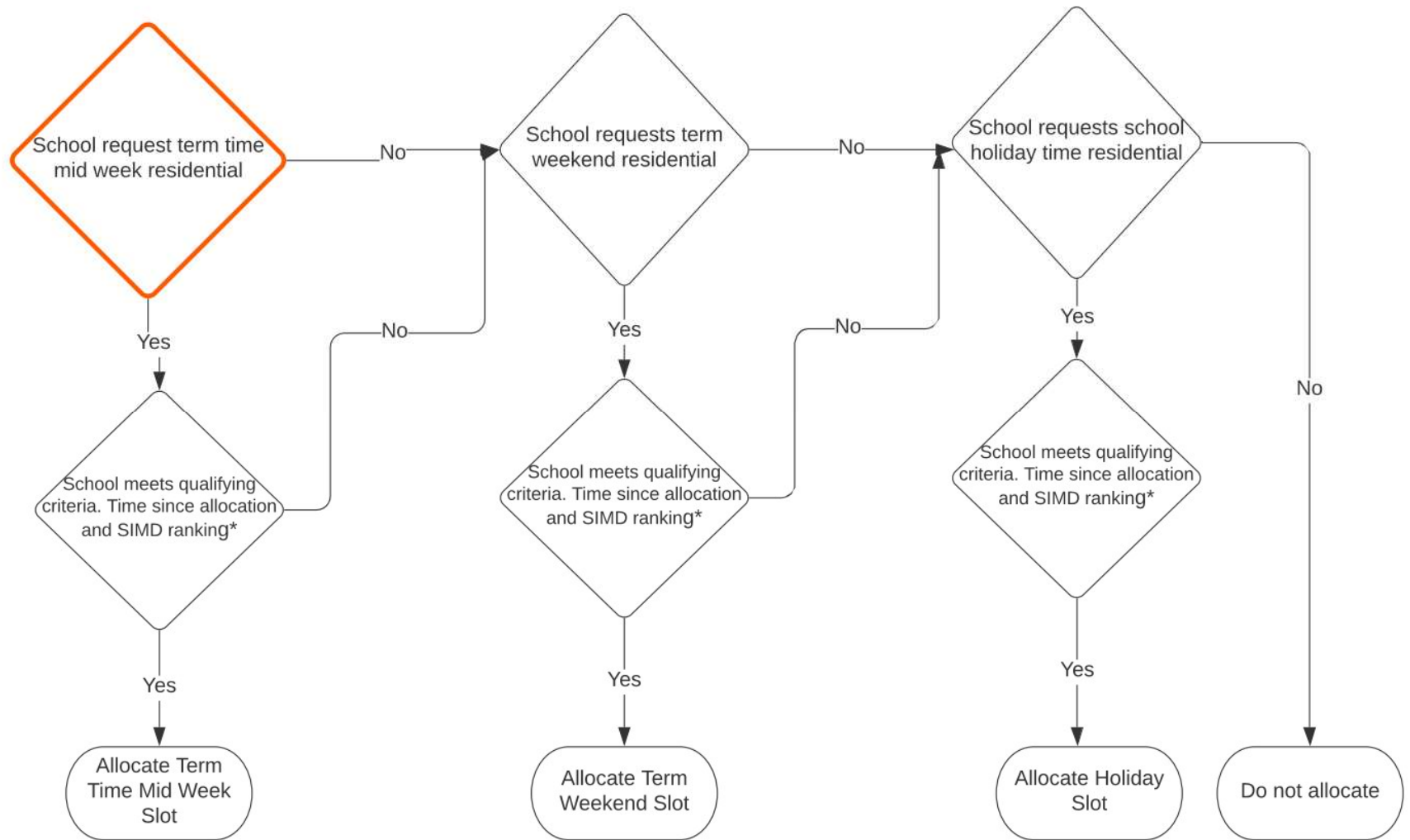


## Blairvadach Residential Centre Schools Allocation Process



## Blairvadach Residential Centre Schools Allocation Process

### **\*Qualifying Criteria**

Schools will be ranked by the following criteria:

**Stage 1.** Priority will be given to those schools who have not received the visit type they have requested for the longest period of time. Visit types includes Mid-Week, Weekend or Holiday Time residential experiences. Schools who request a mid-week slot but are willing to take weekend and attend that weekend, will be prioritised for a mid-week slot in the next academic year. This will hopefully allow some schools to receive a Blairvadach experience each year. Alternating mid-week and weekend visits.

Allocated space which is subsequently cancelled by the school will normally count towards that school's allocation. In exceptional circumstances, the centre manager and head teacher may agree that a cancellation may not count towards a schools allocation.

**Stage 2.** Where schools have not received their chosen visit type for the same length of time, priority will be given to those highest on the SIMD.

**Stage 3.** Where there is still capacity in the programme space will be allocated to groups of the appropriate size. This does sometimes enable smaller groups to be allocated more frequently than larger groups